

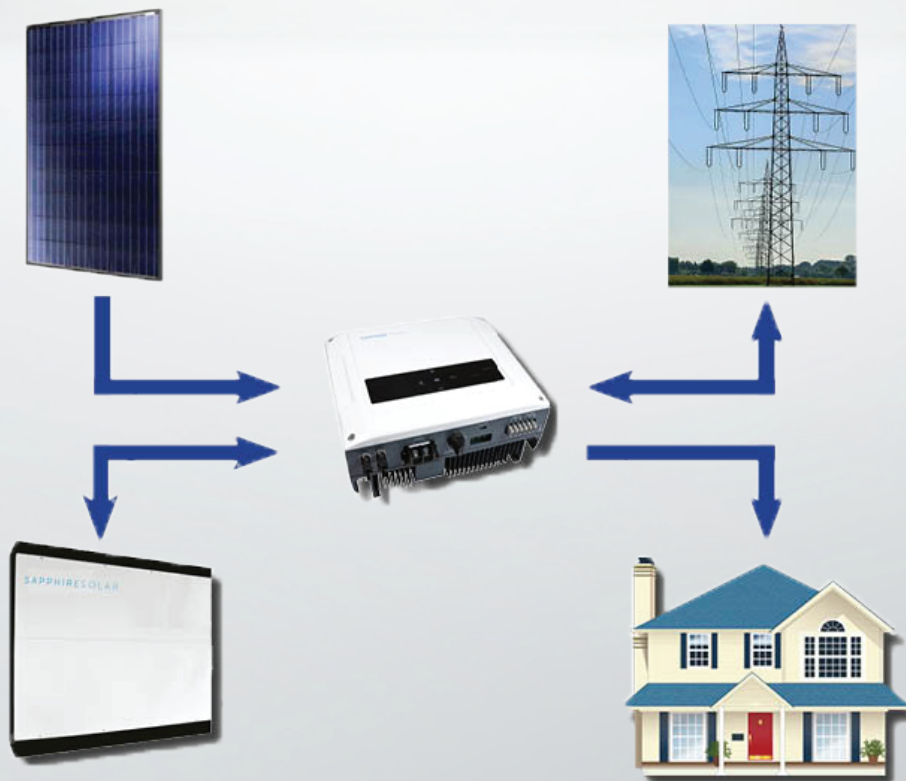
# Lithium Battery GEM Series 4800

## Features:

- ◆ LiFePO4 composition
- ◆ 4.8kWh /DOD 80%
- ◆ High safety and reliability
- ◆ 4000cycles/10 year service life
- ◆ Consistent performance over wide temperature range
- ◆ Wall-mounted, convenient installation
- ◆ Seamless interface with Sapphire Solar Gem Series Hybrid Inverter
- ◆ Integrated state-of-the-art BMS
- ◆ 5 year warranty



## Energy Storage Flow



## SPECIFICATION

GS4800

### *Nominal Parameters*

Voltage	48Vdc
Capacity	100Ah
Energy	4.8kWh
Warranty	5 years
Dimensions(W/H/D)	800/610/167mm
Weight	60kg

### *Basic Parameters*

Life time(25°C)	10 years
Life cycles(80% DOD, 25°C)	4000Cycles
Storage time(-25°C~35°C)	3 months
Operation temperature	-10°C to 50°C @60+/-25% Relative Humidity
Storage temperature	-20°C to 60°C @60+/-25% Relative Humidity
Transport standard	UN 38.3
EMC standard	IEC 61000

### *Electrical Parameters*

Operation voltage	41~54Vdc
Max. charging voltage	54.5 Vdc
Max. charging current	23 A
Max.discharging current	45 A

### *Communication Parameters*

Network interface	RS485
-------------------	-------

COMPONENT PARTNER:

**OptimumNano®**